

# Pristine Solutions

The materials you need for healthy spaces.



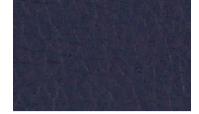
CANTER EPU SAND



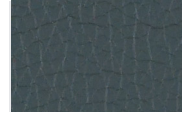
QUARRY



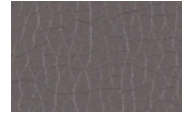
EARTH



NIGHT



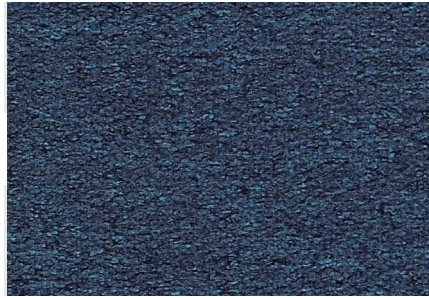
BALLAD



STORM



ONYX



FAUX FELT LAGOON



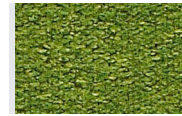
PEBBLE



STONE



VIBRANT



SPROUT



FLANNEL



CHARCOAL



BRAVO II DUSK



GRAYSTONE



NIGHT



SLATE



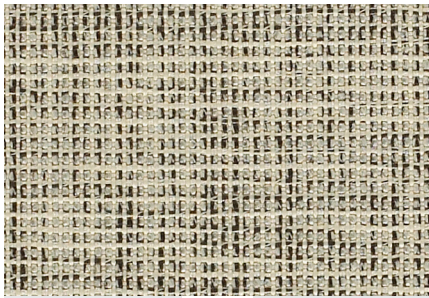
DRIFTWOOD



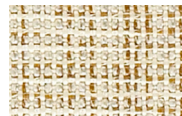
MICA



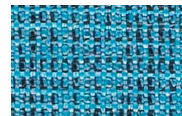
BLACK



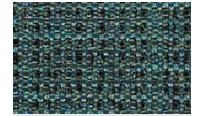
HOBNOB ZEBRA



GINGER



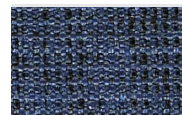
BEYOND



TEAL



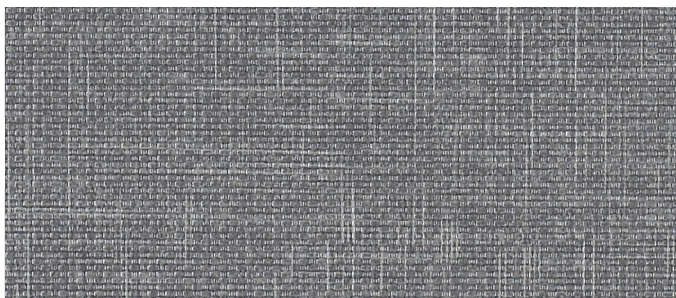
ALARM



DEPTH



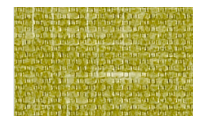
CARBON



VANGUARD CV FRENCH



CREME



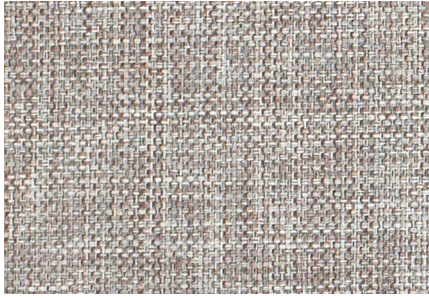
SPROUT



LUNETTE



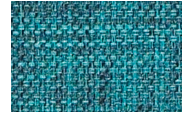
CALICO



COVER CLOTH PLATINUM



TAUPE



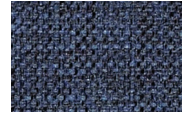
CYAN



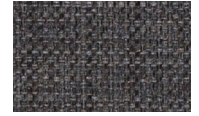
VESPER



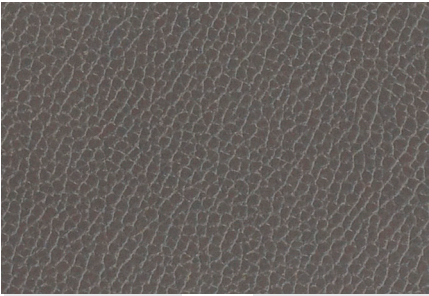
SORREL



INDIGO



GRAPHITE



SILICA LEATHER PEWTER



ALMOND



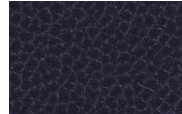
DOVE



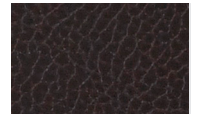
SADDLE



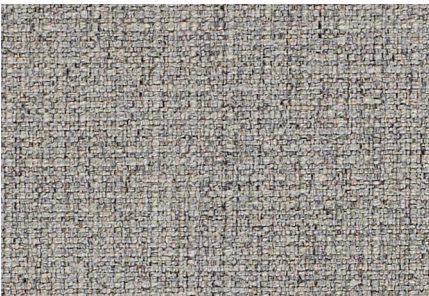
EUCALYPTUS



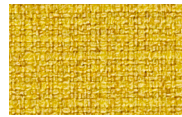
INK



ECLIPSE



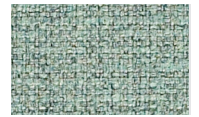
FLOCK NICKEL



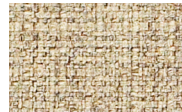
HARP



DEMURE



SURF



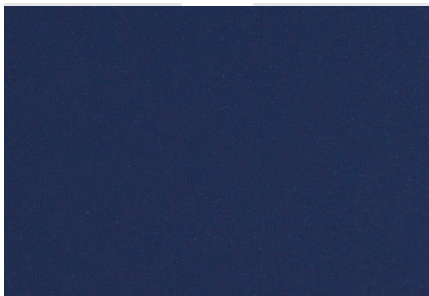
TWINE



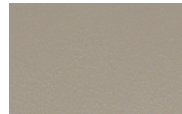
FLANNEL



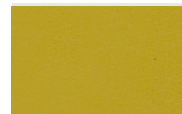
BALTIC



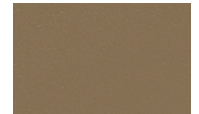
ENDURANCE EPU INK



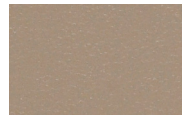
GULL



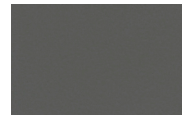
SPROUT



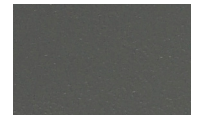
TOBACCO



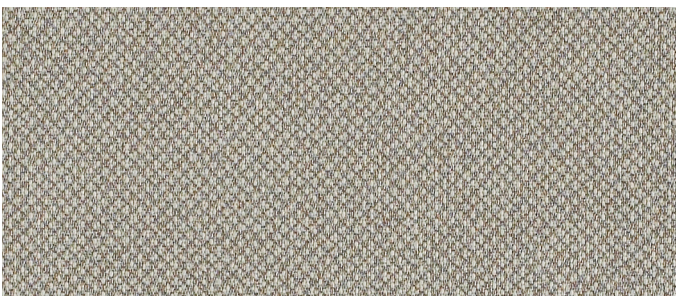
TAUPE



NORDIC



JETTY



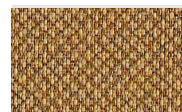
TRIBECA CV MICA



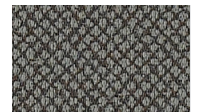
SHELL



CASCADE



ROOT



SHADOW

# TECHNICAL INFORMATION

Pattern - Width	Fiber Content & Backing	Abrasion (D.R.)	Light-fastness	Approx. Repeats	Cleaning Code	+Grades
BRAVO II - 54" ▲ ★ ☆	100% Polyurethane/PVC Free Polyester Backing	500,000	200 Hrs. Class 4.5		W Bleach Cleanable (4:1)	4
CANTER EPU - 54" ▲ ★ ☆	100% EPU Polyurethane Polyester Backing	1,000,000	200 Hrs. Class 4		W Bleach Cleanable (4:1)	3
COVER CLOTH - 59" ▲ ★ ☆	56% Repreve® Post Consumer Recycled Polyester, 44% Polyester	200,000	40 Hrs Class 4		W Bleach Cleanable (10:1)	3
ENDURANCE EPU - 54" ▲ ★ ☆	100% EPU Polyurethane Polyester Backing	1,000,000	200 Hrs. Class 4		W Bleach Cleanable (4:1)	3
FAUX FELT - 56" ▲ ★ ☆	62% Repreve® Post Consumer Recycled Polyester, 38% Polyester	75,000	40 Hrs Class 4.5		WS Bleach Cleanable (10:1)	4
FLOCK - 56" ▲ ★ ☆	53% Recycled Polyester, 47% Polyester	140,000	40 Hrs Class 4.5		W Bleach Cleanable (10:1)	4
HOBNOB - 56" ▲ ★ ☆	51% Recycled Polyester; 49% Polyester	87,000	40 Hrs Class 5		W Bleach Cleanable (10:1)	4
SILICA LEATHER - 54" ▲ ★ ☆	100% Silicone Polyester Backing	210,000	200 Hrs. Class 4		WS Bleach Cleanable (4:1)	6
TRIBECA CV - 54" ▲ ★ ☆	100% Clean Vinyl/Phthalate Free Polyester Backing	100,000	200 Hrs Class 4		W Bleach Cleanable (10:1)	4
VANGUARD CV - 54" ▲ ★ ☆	100% Clean Vinyl/Phthalate Free Polyester Backing	100,000	200 Hrs Class 4		W Bleach Cleanable (10:1)	4

\*ACT® Registered Certification Marks

+Grades provided are based on August 2018 price list.



GREENGUARD Certified. CA Section 01350 compliant. Eligible for CHPS Low-Emitting Material Credits.

## 5 CLICKS

In 5 simple clicks, you can find hundreds of pre-approved, in grade, and in stock fabrics.

All Momentum fabrics are made with recycled or natural fibers. All products are PVC free and GREENGUARD certified.

**MOMENTUM**  
T E X T I L E S

800-366-6839  
memosamples.com

**Indiana**  
FURNITURE

800-422-5727  
indianafurniture.com