

# PANEL BASICS

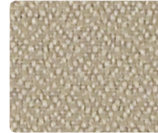
## BASIC



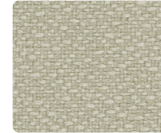
162-010 **Earth**



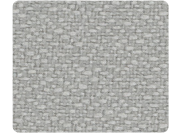
162-007  
**Parchment**



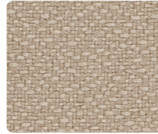
162-017  
**Sand**



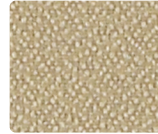
162-003  
**Patina**



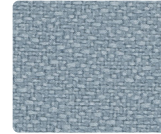
162-026  
**Fog**



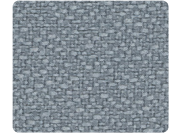
162-027  
**Taupe**



162-002  
**Caramel**



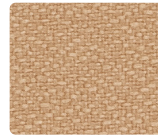
162-014  
**Blue Mist**



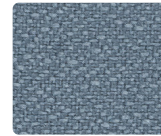
162-016  
**Shadow**



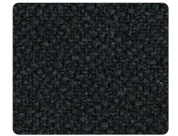
162-000  
**Pumice**



162-009  
**Mesa**



162-004  
**Denim**

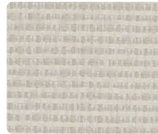


162-006  
**Ebony**

## FRESCO



163-000 **Earth**



163-007  
**Parchment**



163-009  
**Raffia**



163-014  
**Blue Mist**



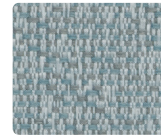
163-016  
**Fog**



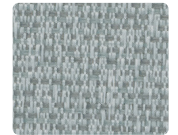
163-017  
**Sand**



163-003  
**Patina**

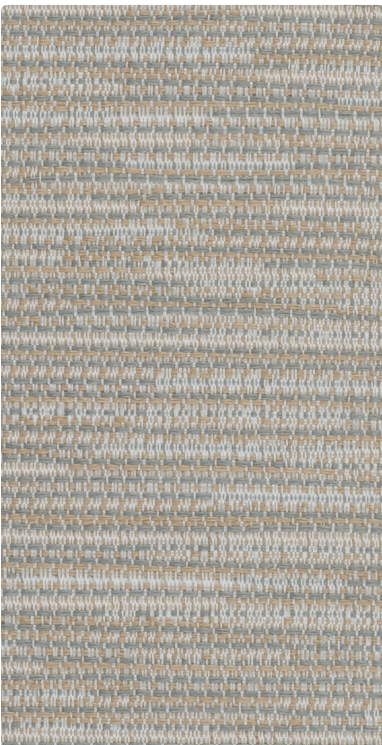


163-004  
**Sky**



163-006  
**Pewter**

## STRATA



164-010 **Cliff**



164-007  
**Ecrú**



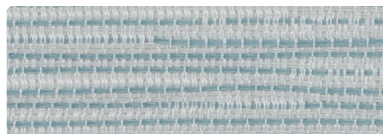
164-020  
**Pumice**



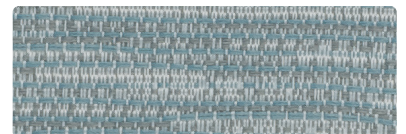
164-017  
**Raffia**



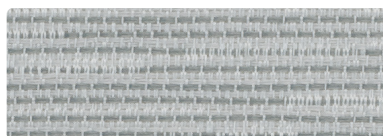
164-003  
**Patina**



164-014  
**Cerulean**



164-004  
**Horizon**



164-006  
**Zinc**



164-000  
**Barl**

# TECHNICAL INFORMATION

## Panel Basics

Pattern 66"	Content and Backing	Certifications	Weight/ Linear Yd.	Pattern Repeat	Finish	Light- Fastness	Flammability	Cleaning Code
<b>BASIC</b>	100% Recycled Polyester (65% Pre-/35% Post-Consumer) Backing: None	GREENGUARD Gold	9.8 oz.	None	None	40 hours	ASTM E84 (Unadhered) Class 1 or A	WS
<b>FRESCO</b> <i>Directional</i>	100% Post-Consumer Recycled Polyester Backing: None	GREENGUARD Gold	10 oz.	None	None	40 hours	ASTM E84 (Unadhered) Class 1 or A	WS
<b>STRATA</b> <i>Directional</i>	100% Post-Consumer Recycled Polyester Backing: None	GREENGUARD Gold	10 oz.	7" H, 8.875" V Non-Matching	None	40 hours	ASTM E84 (Unadhered) Class 1 or A	WS

### REDUCED ENVIRONMENTAL IMPACT

These products are GREENGUARD Gold Certified for low chemical and particle emissions to UL standard UL 2818 and may contribute to LEED certification.

### CARE AND CLEANING INFORMATION

WS: Water/Solvent Cleaner

### DYE TRANSFER DISCLAIMER

Certain clothing and accessory dyes (such as those used on denim jeans) may migrate to lighter colors. This phenomenon is increased by humidity and temperature and is irreversible. Mayer Fabrics will not assume responsibility for dye transfer caused by external contaminants. Please check compatibility when using this product in combination with painted or varnished surfaces.

### ADDITIONAL INFORMATION

Warranty: Please refer to the Mayer website for warranty information by pattern.

Custom Colors: All patterns can be custom colored. Minimum yardage applies.

Digital Swatch Card Color Matching: Due to color variations on different monitors and color printers, actual swatch colors may vary slightly. Please request a memo sample from Mayer Fabrics to ensure proper color representation.

Complete and current product information available at [mayerfabrics.com](http://mayerfabrics.com).



These fabrics meet or exceed these ACT performance guidelines.  
\*Certification Marks owned by ACT®



® This 100% polyester fabric is included in the Underwriter's Laboratory Fabric Recognition Program. Additional testing of this U.L. recognized component is not required on approved panels from participating manufacturers.

©2012  
PBCCD MF1223

# MAYERFABRICS

T 800.428.4415 [mayerfabrics.com](http://mayerfabrics.com)  
500 S. Kitley Ave. Indianapolis, IN 46219