

# INDIANA

FURNITURE

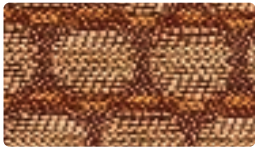


**ECO SYSTEM**  
**ELEMENT PLUS**COORDINATES

---



**MAYER**FABRICS



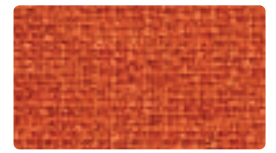
**EQUATION**  
323-000 Bronze



**ELEMENT**  
316-013 Sulfur



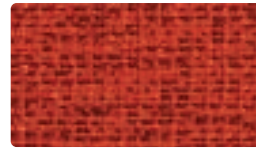
**FACTOR**  
335-009 Copper



**ELEMENT**  
316-009 Copper



**LUNAR**  
334-002 Gold



**ELEMENT**  
316-019 Red Clay



**FOUNDATION10**  
350-019 Terra Cotta



**CATALYST**  
322-009 Copper



**EQUATION**  
323-009 Russet



**CATALYST**  
322-001 Rouge



**LUNAR**  
334-001 Pomegranate



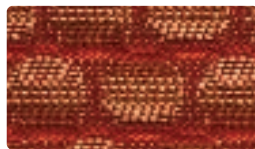
**FACTOR**  
335-001 Pomegranate



**FOUNDATION10**  
350-001 Wine



**FOUNDATION10**  
350-011 Flame



**EQUATION**  
323-001 Rosewood



**COMPONENT**  
324-001 Ruby



**ELEMENT**  
316-008 Plum



**PHOENIX**  
PH-022 Butterscotch



**PHOENIX**  
PH-009 Terra Cotta



**PHOENIX**  
PH-001 Berry



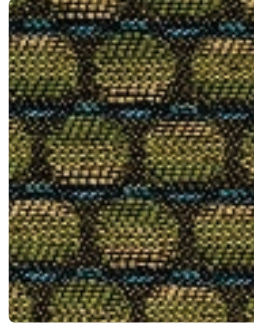
**PHOENIX**  
PH-019 Chili



**EQUATION**  
323-024 Dusk



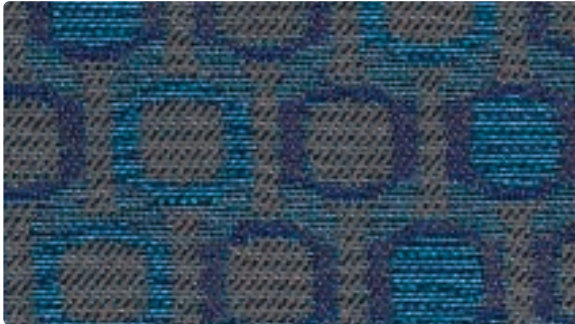
**CATALYST**  
322-014 Dusk



**EQUATION**  
323-003 Jade



**CATALYST**  
322-003 Jade



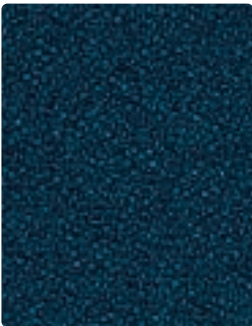
**COMPONENT**  
324-014 Sky



**ELEMENT**  
316-024 Turquoise



**COMPONENT**  
324-013 Turquoise



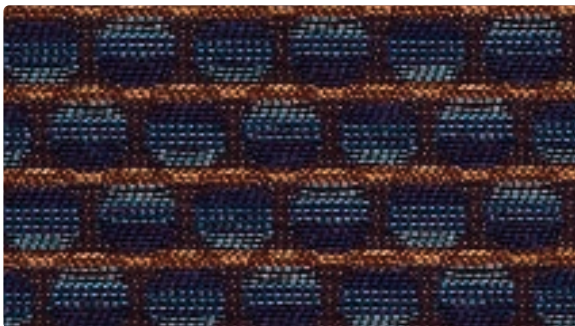
**FOUNDATION10**  
350-044 Capri



**LUNAR**  
334-014 Turquoise



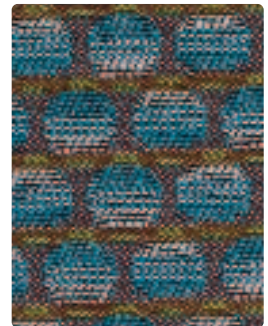
**CATALYST**  
322-024 Teal



**EQUATION**  
323-004 Indigo



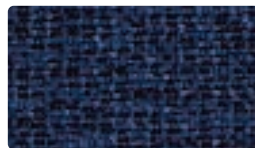
**FOUNDATION10**  
350-064 Ocean



**EQUATION**  
323-014 Aquamarine



**FACTOR**  
335-004 Cobalt



**ELEMENT**  
316-004 Sapphire



**LUNAR**  
334-004 Cobalt



**FOUNDATION10**  
350-004 Sapphire



**PHOENIX**  
PH-023 Mallard



**PHOENIX**  
PH-034 Marina



**PHOENIX**  
PH-024 Cobalt



**PHOENIX**  
PH-004 Admiral



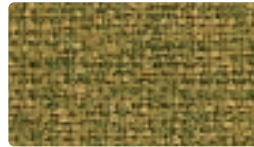
**FOUNDATION10**  
350-093 Basil



**EQUATION**  
323-013 Limelight



**CATALYST**  
322-013 Limelight



**ELEMENT**  
316-003 Feldspar



**FACTOR**  
335-013 Limelight



**ELEMENT**  
316-007 Putty



**COMPONENT**  
324-003 Limelight



**ELEMENT**  
316-010 Taupe



**FOUNDATION10**  
350-020 Bark



**CATALYST**  
322-000 Taupe



**COMPONENT**  
324-000 Bronze



**FOUNDATION10**  
350-007 Sandstone



**EQUATION**  
323-006 Ebony



**ELEMENT**  
316-000 Earth



**FACTOR**  
335-006 Charcoal



**LUNAR**  
334-000 Mocha



**FOUNDATION10**  
350-006 Ebony



**PHOENIX**  
PH-002 Wheat



**PHOENIX**  
PH-010 Mocha



**PHOENIX**  
PH-026 Charcoal



**PHOENIX**  
PH-006 Lava



LUNAR - Repeat: 20.5" H, 10.5" V Random Match

---

#### **CLEANING INFORMATION**

WS: Water/Solvent Cleaner – Spot clean, with a mild solvent, an upholstery shampoo, or the foam from a mild detergent. When using a solvent or dry cleaning product, follow instructions carefully and clean only in a well-ventilated room. Avoid any product that contains carbon tetrachloride or other toxic materials. With either method, pretest a small area before proceeding.

#### **PHOENIX CLEANING INFORMATION**

Day-to-day soil – Remove ordinary dirt and smudges with a mild soap and warm water solution. Dry with a soft, lint-free cloth or towel. For more difficult stains, use a stronger detergent; however, follow the detergent manufacturer's instructions closely.

More difficult stains – Use nonabrasive household cleaners such as Formula 409® All-Purpose Spray Cleaner or Fantastik® Spray Cleaner with water and a soft cloth. A mild solvent-type cleaner such as rubbing alcohol (isopropyl/alcohol) may also be used. Apply moderately with a soft cloth. Dry area with another cloth, rinse with water and dry.

---

#### **FOUNDATION10 TEN YEAR WARRANTY**

FOUNDATION10 is covered by a 10-year limited performance warranty from the date of installation, when used for seating applications. FOUNDATION10 is warranted against wear through (i.e. the complete deterioration of the fabric's structure in a particular area) if properly installed and maintained. This warranty does not cover damage due to abuse, misuse, vandalism, inadequate padding or abrasion from other seating components or furniture, use of improper cleaning agents or methods and use subsequent to ownership by the original purchaser. Mayer Fabrics can provide a copy of the manufacturer's warranty.

If FOUNDATION10 fails to perform during the 10-year warranty period, the affected area of fabric will be repaired or replaced including labor and materials upon written request of the customer.

Except as expressly provided herein, Mayer Fabrics makes no representations or warranties, express or implied, including, without limitation, any warranty of merchantability or fitness of its products for any particular purpose, and hereby disclaim the same.

---

# TECHNICAL INFORMATION

## Eco System Element Plus Coordinates

Pattern 54"	Content and Backing	Weight/ Linear Yd	Pattern Repeat	Finish	Abrasion Wyzenbeek <sup>ACT</sup>	Light <sup>ACT</sup> Fastness	Flammability <sup>ACT</sup>	Cleaning Code
CATALYST <i>Directional</i>	100% P. I. Recycled Polyester	8.6 oz.	2.5" H 3" V	None	Exceeds 90,000 Double Rubs	Exceeds 60 hours	Cal. 117-E (Equiv. to BIFMA) NFPA 260 (Equiv. to UFAC)	WS
COMPONENT <i>Directional</i>	100% P. I. Recycled Polyester	9.6 oz.	7.14" H 3" V Random Match	None	Exceeds 50,000 Double Rubs	Exceeds 60 hours	Cal. 117-E (Equiv. to BIFMA) NFPA 260 (Equiv. to UFAC)	WS
ELEMENT <i>Directional</i>	100% P. I. Recycled Polyester	13.2 oz.	Non- Matching	StainSmart <sup>®</sup> with AlphaSan <sup>®</sup>	Exceeds 130,000 Double Rubs	Exceeds 60 hours	Cal. 117-E (Equiv. to BIFMA) NFPA 260 (Equiv. to UFAC)	WS
EQUATION <i>Directional</i>	100% P. I. Recycled Polyester	9.61 oz.	1" H .4" V	None	Exceeds 70,000 Double Rubs	Exceeds 60 hours	Cal. 117-E (Equiv. to BIFMA) NFPA 260 (Equiv. to UFAC)	WS
FACTOR <i>Directional</i>	100% P. I. Recycled Polyester	9.61 oz.	.625" H .5" V	None	Exceeds 60,000 Double Rubs	Exceeds 40 hours	Cal. 117-E (Equiv. to BIFMA) NFPA 260 (Equiv. to UFAC)	WS
FOUNDATION10 (T)	100% P. I. Recycled Polyester	13.9 oz.	None	Stain Repellent	Exceeds 1,000,000 Double Rubs	Exceeds 60 hours	Cal. 117-E (Equiv. to BIFMA) NFPA 260 (Equiv. to UFAC) ASTM E84	WS
LUNAR <i>Directional</i>	100% P. I. Recycled Polyester	9.22 oz.	20.5" H 10.5" V Random Match	None	Exceeds 70,000 Double Rubs	Exceeds 40 hours	Cal. 117-E (Equiv. to BIFMA) NFPA 260 (Equiv. to UFAC)	WS
PHOENIX	100% Urethane - PVC FREE Brushed Woven Rayon Backing	19.5 oz.	None	Polyurethane	Exceeds 1,002,000 Double Rubs	Exceeds 40 hours	Cal. 117-E (Equiv. to BIFMA) NFPA 260 (Equiv. to UFAC) MVSS-302	WS

P.I. = Post Industrial

May comply with California Technical Bulletin 133 when combined with appropriate components.

### ELEMENT STAIN RESISTANCE

StainSmart<sup>®</sup> – StainSmart<sup>®</sup> provides fabrics their ability to repel stains by causing liquids, such as coffee, juice, water or sodas, to bead up on the surface where they can be easily wiped away. StainSmart<sup>®</sup>'s stain release features mean that a broad array of common stains – dirt, motor oil, permanent markers, lipstick – can be cleaned with soap, water and a vacuum should they penetrate the fabric's surface.

### ELEMENT BACTERIAL RESISTANCE

AlphaSan<sup>®</sup> is a silver-based antimicrobial technology, which has been documented to be safe and effective. AlphaSan<sup>®</sup> inhibits the growth of mold, mildew and other microorganisms through the safe release of silver ions, resulting in a fresh surface, free from odors and stains.

### PHOENIX ECO SYSTEM INFORMATION

Chlorine, bromine, or phthalate ester plasticizer materials were not used in the manufacturing of Phoenix.

Many of the materials used in the manufacturing of Phoenix may contain very low VOC content. Phoenix is protected by a top-finish coating that contains organic solvents. The organic solvents (VOC's) portion of the top-finish are removed during the manufacturing process. The final product contains only trace levels of VOC's. The material may meet Chair/Cushion VOC requirements.

### ADDITIONAL INFORMATION

For information or assistance with products or services, call us at 800.428.4415 or refer to our web site. [www.mayerfabrics.com](http://www.mayerfabrics.com).

**Custom Capabilities:** All patterns can be custom colored. Minimum yardage applies.

**Memo Samples:** Please keep this card intact. Individual memo samples and additional colors can be ordered on our web site or by contacting customer service.

**Color matching:** Mayer Fabrics attempts to ship a satisfactory commercial match. Because of industry standard dye lot variation, colors may not match exactly.

**Specifications:** Specifications are correct at the time of printing. Current specifications are available on our web site.

\* ACT<sup>®</sup> Registered Certification Marks



100% of the electricity used to make FOUNDATION10 is matched by GREEN-E certified Renewable Energy Certificate ([www.green-e.org](http://www.green-e.org))



(T) Terratex is a registered trademark of True Textiles Inc, and designates fabrics that are made from 100% recycled or compostable materials using increasingly sustainable manufacturing practices to produce a high quality product that is recyclable at the end of its useful life.



INDIANA  
FURNITURE

