

# The Beauty of Wood

Wood brings warmth and character to working environments through a gradually emerging beauty and inherent variation.



Indiana  
FURNITURE





## NATURE. CAPTURED.

Many say nature is perfectly imperfect. We would agree. Since 1905, we've been capturing nature's beauty in all of our wood products.

From desks to seating, tables to space dividers, our hand-crafted finishes bring out the best in every work surface, door, and accent made especially from wood.

We start by selecting only premium grade veneers and hardwoods. Our wood experts then delicately lay up the selected pieces and prepare them for the finish of your choice. The end result...a beautiful, functional piece of art.

From nature and back again, throughout the multiple manufacturing processes, we are always considering the environment. By using renewable and recyclable materials, we have achieved BIFMA level®, BIFMA Compliance®, and other sustainable and durability certifications. It's our way of maintaining the integrity of nature's products, while doing our part for many generations to come.

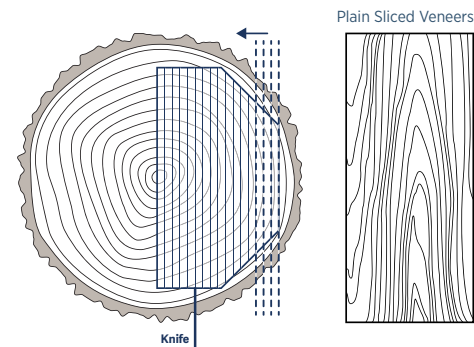


Indiana Furniture takes great pride in providing our customers with quality veneer product. Our offering consists of natural and reconstituted veneers harvested from an array of rapidly renewable species, like Maple, Cherry, and Walnut—all available in a broad spectrum of finish colors to meet your desired look.

To ensure long-lasting durability and beauty, we utilize several techniques to properly cut and lay up veneers on our products.

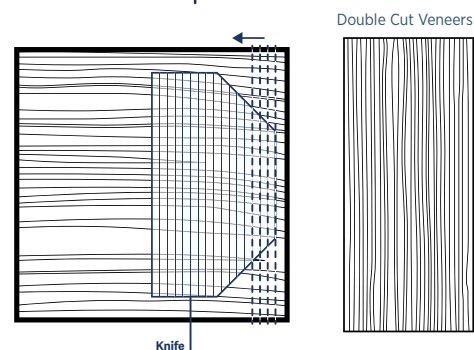
### Plain Sliced (Flat Cut) Veneers

We start by reviewing natural veneer, verifying that it meets our specifications for uniformity of color and grain pattern. They are manufactured by slicing the log in an up-and-down movement, providing straight grain characteristics intermixed with cathedrals.



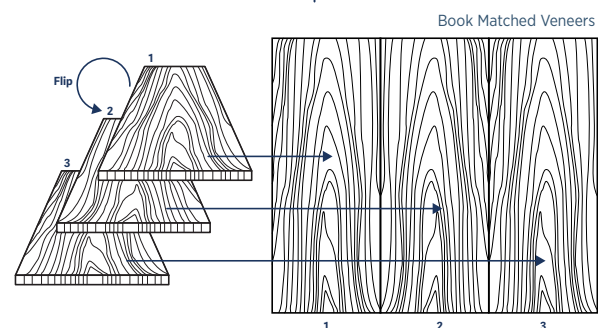
### Double Cut (Composite Wood) Veneers

For composite or reconstituted veneers, we use the method of double cutting. First the log is sliced and the layers are stacked, then sliced again. This method bisects annual growth rings and results in a straight grain or ribbon-striped appearance. It is specifically engineered for improved consistency in grain and color.



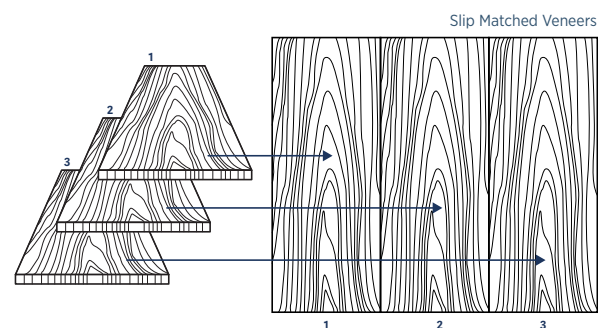
### Book Matched Veneers

First we begin with balanced panels, meaning veneer flitches are equal in width. Then alternating pieces of veneer are flipped so they face each other as do the pages within a book. This method is commonly used with our Cherry, Walnut, and Oak veneers.



### Slip Matched Veneers

Like with Book Match, we begin with balanced veneer flitches equal in width. Then we join the veneer pieces in sequence without flipping the pattern. This method is commonly used with our Maple veneers.



### UVAdvantage Topcoat

Our UVAdvantage finish does not emit irritant toxins, formaldehyde, or solvents into the air, contributing to safer and healthier work environments by meeting Indoor Air Quality Certification requirements.

UVAdvantage exceeds the performance of other UV topcoats available in the industry on durability and reduces the likelihood of damage from abrasions, scratches, stains, and common chemicals, all while magnifying the beauty of wood by reducing the darkening, aging, and yellowing process that naturally occurs over time.

As a product of nature, there are characteristics and variances unique to each and every cut of wood. These characteristics build the charm and beauty, as no two pieces are alike. As with all organic materials, there are things to expect as the wood adjusts to its new life in your working space. Here are just a few:

### Aging

Aging will occur over time, changing the color of wood. The degree to which it changes varies on material and environmental conditions. This is a completely natural process and reflects the intrinsic beauty of wood. Environmental factors include interior lighting, sunlight, humidity, and tobacco smoke, among others.

### Color Variation

Color and grain variations are natural characteristics of authentic wood surfaces. These variations are highlighted/softened through the application of quality finishes. Created by our in-house experts, and unique to Indiana Furniture, our finishes are formulated to bring out the beauty of wood in every application. Though we take efforts to provide consistency, wood components will always be consistently unique.

### Joints

Expansion and contraction with wood is completely normal. You may observe a slight separation (hairline cracks) at joints in the finish surface and, although we may try to eliminate or minimize this, it is perfectly natural. If this occurs, the strength of the joint is not weakened.

### Metamerism (Flip)

Metamerism, or flip, is an effect produced by wood where two similar pieces of veneer look very different based on viewing angle and direction, lighting, grain pattern, and texture. This may cause a surface to look light from one angle yet look darker from the opposite viewing angle, appearing that the surfaces don't match. This typically occurs when wood grains meet at 90° angles.

### Mineral Streaks

A mineral streak is an area of the wood that has a different color, typically blackish-blue, grey, or olive, due to the minerals the tree extracts from the soil. The streaks run parallel with the grain and may produce a slight surface crack, but there is no change in the structural integrity. Often considered to add value and appeal to the wood, mineral streaks may appear lighter or darker than other areas once finish is applied.

### End Grains

End grains may appear darker, as more stain is absorbed due to the softer material. This is a natural reaction when the stain is applied and not deemed as a defect.



## Natural Versatility.

Whether in a private office, open plan, shared project area, or beyond, wood gives you the versatility to bring the outdoors in.



**Indiana**  
FURNITURE

1224 Mill Street  
PO Box 270  
Jasper, Indiana 47547-0270

Tel 812.482.5727  
Tol 800.422.5727  
Fax 812.482.9035  
sales@indianafurniture.com  
www.indianafurniture.com

