

# Surface Materials

A comprehensive program thoughtfully selected to complement our entire portfolio.



Indiana  
FURNITURE

# Luxurious Materials coupled with Distinctive Style.

What makes one interior distinct from another is the clever curating of colors, textures, and styles to create something that expresses you and your unique space.

Inspired by nature, our holistic palette provides a relevant light-to-dark spectrum that adds to the beauty of any environment, and features low-emitting finish systems to meet indoor air quality standards which support sustainable initiatives in the workplace.

From the depth of our veneers and woodgrain laminates to our enduring metal, stone, and patterned acrylics, this comprehensive program was thoughtfully selected to complement our entire portfolio of products, giving you complete freedom to create the environment you want.

## Wood Finishes & Woodgrain Laminates



**Beigewood (BW)**  
TFL, HPL, Seating\*



**Sugar Maple (SM)**  
Veneer, TFL, HPL, Seating



**Oak Riftwood (ORW)**  
Veneer\*, TFL, HPL, Seating\*



**Sunflow Walnut (SW)**  
Veneer, Seating



**Fawn Oak (FO)**  
Veneer\*, Seating\*



**Weathered Ash (WTA)**  
Veneer\*, TFL, HPL, Seating\*



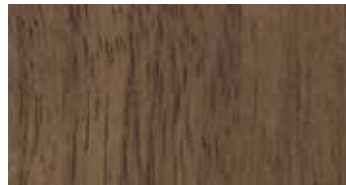
**Smoky Brown Pear (SBP)**  
Veneer\*, TFL, HPL, Seating\*



**Asian Night (AS)**  
Veneer, TFL, HPL, Seating



**Studio Teak (TK)**  
TFL, HPL, Seating



**Pinnacle Walnut (PNW)**  
TFL, HPL, Seating



**Tavern Teak (TT)**  
Veneer, Seating\*



**Harvest Maple (HVM)**  
Veneer, TFL, HPL, Seating\*



**Medium Oak (MO)**  
Veneer\*, Seating\*



**Golden Cherry (GC)**  
Veneer, TFL, HPL, Seating



**Legacy Walnut (LW)**  
Veneer, Seating



**Artisan Walnut (AW)**  
Veneer, Seating



**Shaker Cherry (SKC)**  
Veneer, TFL, HPL, Seating



**Select Cherry (SCH)**  
Veneer, TFL, HPL, Seating



**Williamsburg Cherry (WC)**  
Veneer, TFL, HPL, Seating



**Harvest Walnut (HW)**  
Veneer, Seating



**Dark Cherry (DC)**  
Veneer, Seating



**Mahogany Walnut (MW)**  
Veneer, TFL, HPL, Seating



**Columbian Walnut (CO)**  
Veneer, TFL, HPL, Seating



**Dark Forest Walnut (DFW)**  
Veneer, Seating\*



**Espresso (EW/EF)**  
Veneer, TFL, HPL, Seating

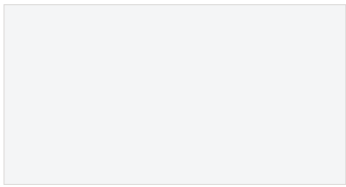
Our UVAdvantage finish does not emit irritable toxins, formaldehyde, or solvents into the air, contributing to safer and healthier work environments by meeting Indoor Air Quality Certification requirements.

UVAdvantage exceeds the performance of other UV topcoats available in the industry on durability and reduces the likelihood of damage from abrasions, scratches, stains, and common chemicals, while magnifying the beauty of wood by reducing the darkening, aging, and yellowing process that naturally occurs over time.

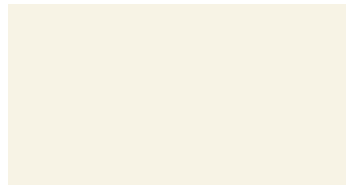


\* Low Sheen

## Solid Laminates & Accents



**Designer White (WH)**  
TFL, HPL, Seating



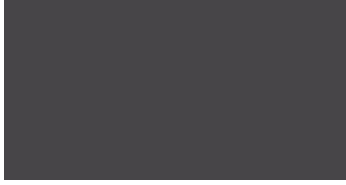
**White Sand (WHS)**  
TFL, HPL



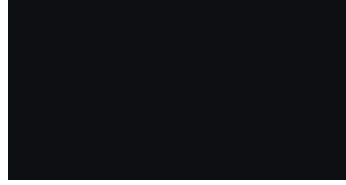
**Fashion Grey (FHG)**  
TFL, HPL



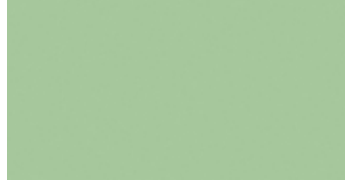
**Pepperdust (PPD)**  
TFL, HPL



**Slate Grey (SG)**  
TFL, HPL



**Black (BL)**  
TFL, HPL, Seating



**Enamel (ENL)**  
HPL (currently used on Iconic + Plush)



**Blush (BSH)**  
HPL (currently used on Iconic + Plush)



**First Kiss (FK)**  
HPL (currently used on Iconic + Plush)

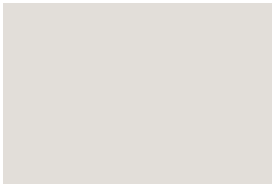


**Surfin USA (SUS)**  
HPL (currently used on Iconic + Plush)



**Summer Vacation (SV)**  
HPL (currently used on Iconic + Plush)

## Iconic 3D Laminates



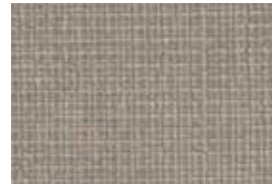
**Matte White (WH3)**  
(currently used only on Iconic)



**Concrete (CR3)**  
(currently used only on Iconic)



**Matte Black (BL3)**  
(currently used only on Iconic)



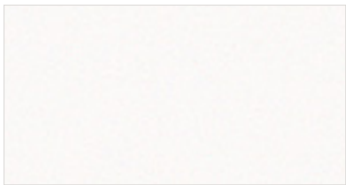
**Pewter Mesh (PTM)**  
HPL (used only on training tables)



**Steel Mesh (STM)**  
HPL (used only on training tables)

## Patterned Laminates

## Solid Surfaces



**Snow White (SW)**



**Pebble Beach (PE)**



**Sedona (SE)**



**Arroyo (AR)**



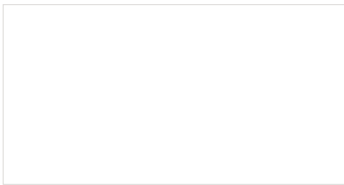
**Tundra (TN)**



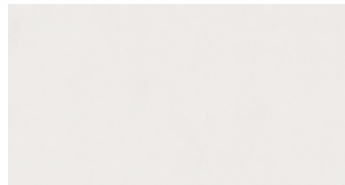
**Starry Night (SN)**

3D laminate surfaces eliminate the need for edge banding, visible seams, and special edge treatments. The elimination of seams helps to mitigate the accumulation of potential contaminants and simplifies cleaning. Our Matte White and Matte Black options are not only durable, they leave no fingerprints. The matte, soft touch finish will add a sense of luxury, beauty, and style to any interior space. Our Concrete option features a city-inspired, grey concrete surface with an embossed texture that is real to the touch and feel.

## Metal Options



Oyster White (OYST)



Sugar Cookie (SUGC)



Aluminum (ALUM)



Chrome (CHRM)

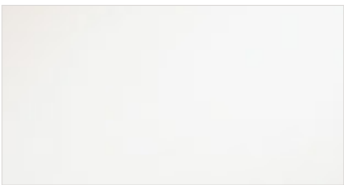


Mist (MIST)



Noir (NOIR)

## Canvas & Gesso High Gloss Acrylics



White (WHA)



Wired Mercury (WMA)

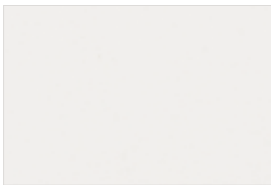


Graphite (GPA)



Black (BLA)

## Square One Wood Finishes



Aspen White (AWH)



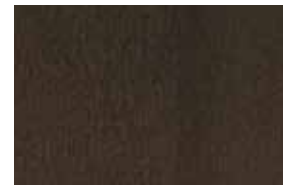
Natural Beech (NB)



Truffle Rain (TR)

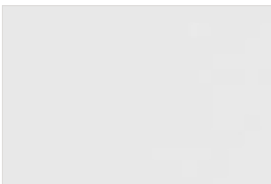


Orchard (OR)



Ember Gray (EG)

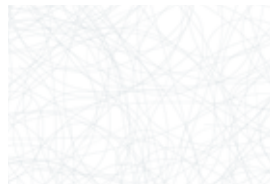
## Square One Acrylic Options



Frosted (FSTA)



Raffia (RAFA)



Tinsel (TNSA)



Twigwork (TGWA)

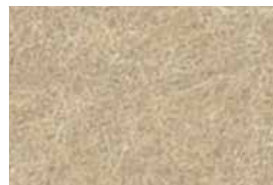


Woven (WOVA)

## Square One Acoustic Options



Milky (MLK)



Taupe (TPE)



Grey (GRY)



Ash (ASH)



Black (BLK)

Colors represented are high-resolution reproductions and may vary slightly from the actual product. To order samples, please contact our Customer Service team or order online at [www.indianafurniture.com](http://www.indianafurniture.com). Graining and finish colors may vary, yet will continue to complement, across Veneer, HPL, TFL, and Seating products due to the inherent differences of these materials.

## Thoughtful Environments

Our holistic palette adds to the beauty of any environment while featuring low-emitting finish systems to meet healthy and safe indoor air quality standards.



**Indiana**  
FURNITURE

1224 Mill Street  
PO Box 270  
Jasper, Indiana 47547-0270

Tel 812.482.5727  
Tol 800.422.5727  
Fax 812.482.9035  
sales@indianafurniture.com  
www.indianafurniture.com

